

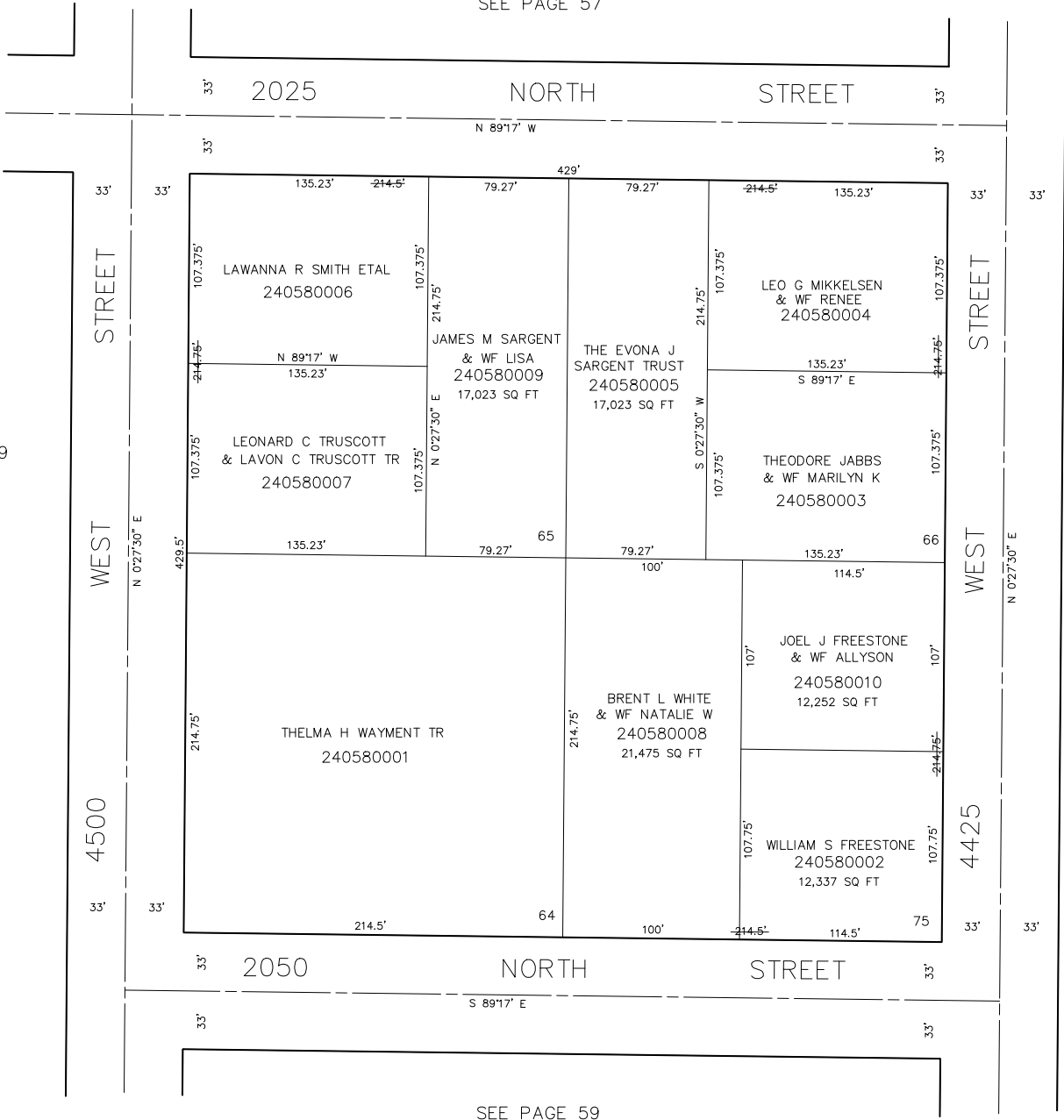
PART OF S.E. 1/4, SEC. 32, T.7N., R.2W., S.L.B. & M.

PLAIN CITY
LOTS 64 TO 66, & 75, PLAT B

TAXING UNIT: 21

SCALE 1" = 50'

SEE PAGE 57



SEE PAGE 49

SEE BOOK 19
PAGE 32

SEE ORIGINAL DEDICATION
PLAT OF PLAIN CITY IN
BOOK 5, PAGE 80 OF RECORDS.

SEE PAGE 59